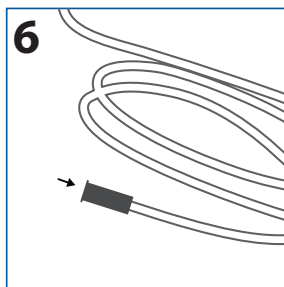
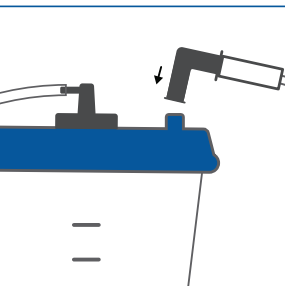
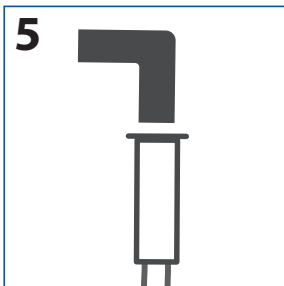
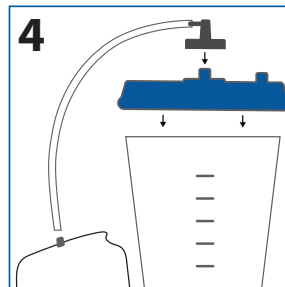
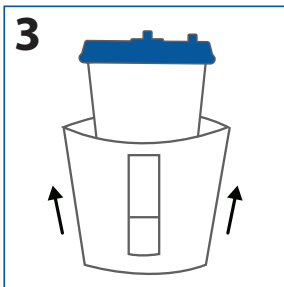
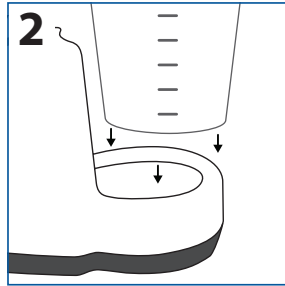
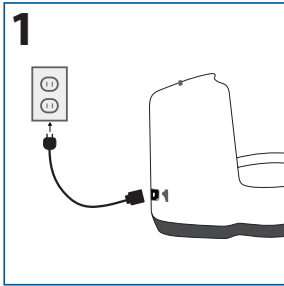


# BD PureWick™ Urine Collection System

## Quick Setup Guide



1. Plug power cord into device outlet and into the A/C power outlet. Note: Make sure the power switch is turned off.
2. Place collection canister in the base and press down firmly on the lid making sure the lid is sealed.
3. Optional: Slip privacy cover onto the canister prior to placing canister into base.
4. Attach pump tubing to the PureWick™ Urine Collection System connector port and the connector port on the collection canister lid.
5. Attach the elbow connector to the collector tubing and connect elbow connector to the connector port on collection canister lid.
6. Connect other end of collector tubing to a PureWick™ External Catheter.

**Indications for use:**

The PureWick™ Urine Collection System is to be used with PureWick™ External Catheters which are intended for non-invasive urine output management.

**Contraindications for use:**

Do not use the PureWick™ Urine Collection System with PureWick™ External Catheters on individuals with urinary retention.

Please consult package insert for more detailed safety information and instructions for use.

C. R. Bard, Inc., Covington, GA 30014, U.S.

BD, the BD Logo and PureWick are trademarks of Becton, Dickinson and Company and its affiliates.  
© 2020 BD. All rights reserved. 1904-17 BD-13057

