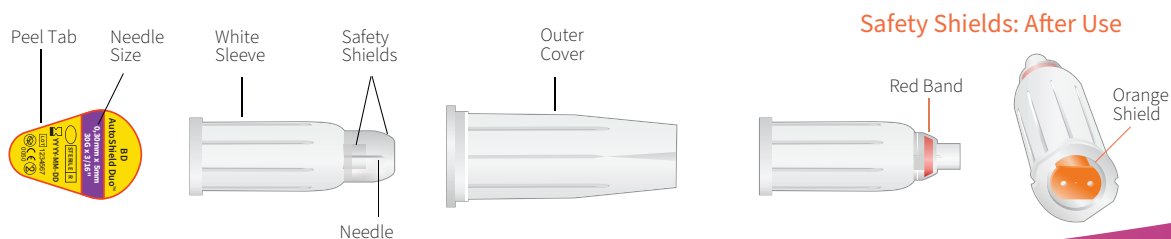
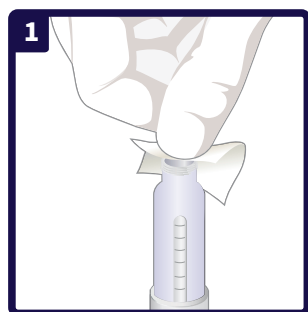


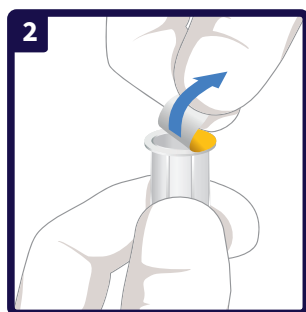
BD AutoShield Duo™ Safety Pen Needle with Dual Automatic Protective Shields



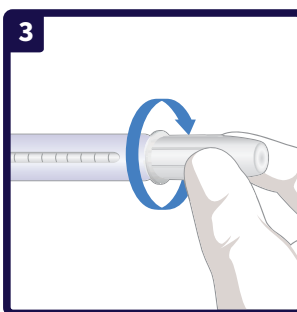
How to inject insulin with AutoShield Duo™ 5mm Safety Pen Needle



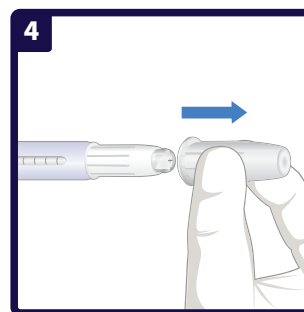
Remove the pen cap and wipe the rubber seal with an alcohol swab.



Pull the peel tab off the pen needle.



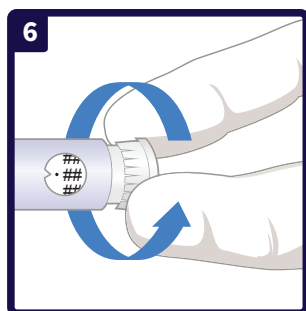
Holding the outer cover, screw the pen needle straight onto the pen.



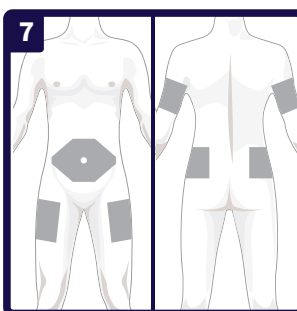
Remove the outer cover.



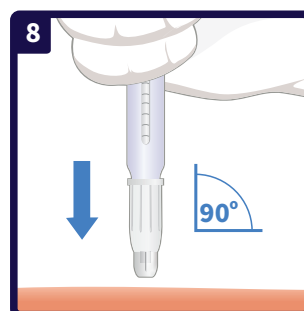
Prime the pen to ensure the needle is open and working.



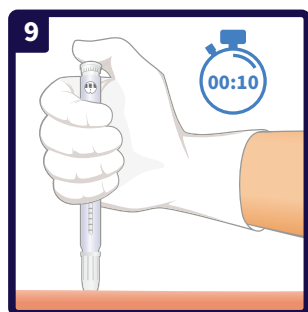
Dial the prescribed dose.



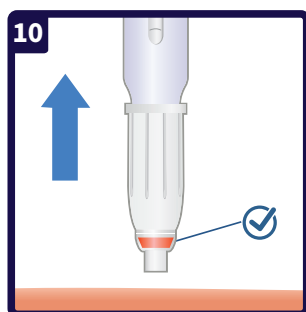
Choose the injection site and disinfect the skin. Rotate injections between and within sites.¹



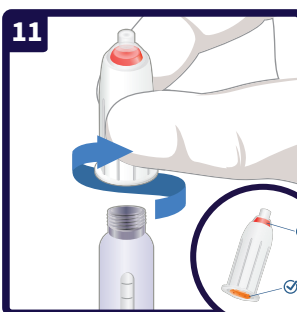
Inject into the skin at a 90-degree angle without a skinfold.¹ Maintain constant pressure against the skin (do not change hands).



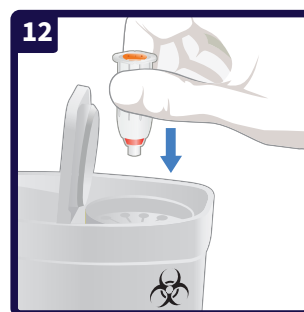
Push the dose button; leave the needle in the skin for up to 10 seconds.



Withdraw the needle from the skin. A red indicator band appears inside the clear safety shield.



Hold the white sleeve of the pen needle and twist it off. The pen connection end of the needle is now protected with an orange shield.



Dispose of the pen needle in a sharps container.

^{*} Patients 6 years old and younger as well as very thin adults may require a pinch-up.

¹ Frid AH, Kreugel G, Grassi G, et al. New insulin delivery recommendations. Mayo Clin Proc. 2016;91(9):1231-1255.

embecta.com

embecta, formerly part of BD. BD is the manufacturer of the advertised products. embecta and the embecta logo are trademarks of Embecta Corp. BD and the BD Logo are trademarks of Becton, Dickinson and Company. All other trademarks are the property of their respective owners. © 2023 Embecta Corp. All rights reserved. 2302380072ASDHTU



Scan here for a
video tutorial

embecta™